



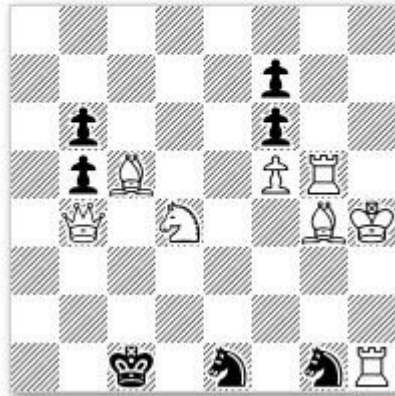
>>44668

Kárpáti, Aurél M.

Tipografia TE

2<sup>nd</sup> Prize

Tipografia TE, 1968



h=2

2 solutions

8+7

**Section C - Ser-h=n, Ser-=n, Ser-r=n or Ser-s=n** with Rex Multiplex. The theme is free. Problems containing more than two white or black kings are allowed.

Fairy conditions and pieces are not allowed. See example

<https://www.yacpdb.org/#340403> **Solution:** 1.Bxf6 2.Sc3 3.Bd5 4.Bb7 5.Qd5 6.Kc5 7.Kb4 8.Qd6 9.S7d5 10.Se3 11.Kf4 12.g3 13.g2 14. g1=Q 15.Qg4 16.Qc8 17.Qf8 gxf8=Q=.

>>340403

Perrone, Gaspar J.

Best Problems, Jun 2005 (35/1426)



Ser-h=17

10+11

**Section D - Fairies** with Color Chess condition. Free theme, all genre. In this section will be registered originals and all problems published in Curierul Preblemistic from 2018. The problems will be solved with WinChloe using the

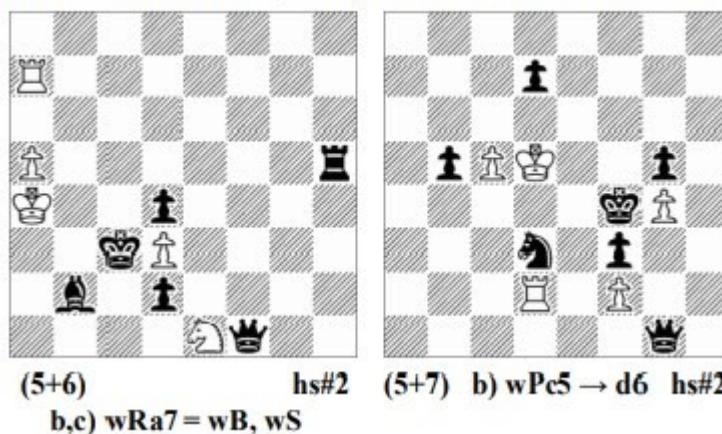
## Color condition



**Section E - HS#2** with the next theme: in the initial position the white and black have a thematic piece. In the first example, the white thematic piece gives *check* on the fields located on the column and the black thematic piece *moves* on the column. The thematic pieces are Ra7 and Qf1 and the thematic squares are b3,b4,b5 respectively, f5, f7 and f8. In the second example, the column is changed with a line. The thematic pieces are Rd2 and Qg1 and the thematic squares are b4 and d4 respectively, d1 and e1.

See examples:

Dan-Constantin Gurgui (Curierul Problemistic 7/2021)



Solutions:

1st example a) 1.Ra7-b7 Qf1-f7 2.Rb7-b3 + Qf7xb3 #, b) 1.Ba7-c5 Qf1-f8 2.Bc5-b4 + Qf8xb4 #, c) 1.a5-a6 Qf1-f5 2.Sa7-b5 + Qf5xb5 #.

2nd example a) 1.Rd2-b2 Qg1-d1 2.Rb2-b4 + Sd3xb4 #, b) 1.Rd2-e2 Qg1-e1 2.Re2-e4 + Qe1xe4 #.

**Section F - #N.** Problems are required in which white or black has a queen and more pawns. In the examples below, if white has a queen then black is not allowed to have this piece and vice versa. Free theme.

**Jahn, Günther**

Die Schwalbe

Special Prize

Die Schwalbe, Jun 1979 (2793)

Schwalbe-Pokal 1979-1980 1. Platz



#10

2+7 #11

**Moravec, Josef**

FIDE Revue, Mar 1962



2+7 #11

**Nedeianu, Gabriel**

Magyar Sakkélet, 1983 (9/4719)



2+11

**Kubáni, František**

Pravda (Bratislava), 1986 (1846)



#11

4+3

**Зиновьев, Николай С.**

Ideal-Mate Review, Jan 2004 (93-94/14138)



#10

4+3

**Зиновьев, Николай С.**

StrateGems, Jan 2003 (21/M287)



#13

5+2

See examples:

<https://www.yacpdb.org/#67492>, <https://www.yacpdb.org/#67543>, <https://www.yacpdb.org/#67549>, <https://www.yacpdb.org/#302978>, <https://www.yacpdb.org/#67559>, <https://www.yacpdb.org/#68682>, <https://www.yacpdb.org/#69381>, <https://www.yacpdb.org/#70311>, <https://www.yacpdb.org/#188433>, <https://www.yacpdb.org/#299351> etc.

**Section G - Shortest Proof Game** with "The Return of the Prodigal Sun" theme. In this example, the thematic piece is bPf7 which turns white on the fourth move and returns to its initial position to make the black king checkmate. The Masand fairy condition is mandatory.

See example:

375. Dan-Constantin Gurgui  
Curierul Problemistic 4/2020



PG 9.5 (15+13)  
Glasgow & Masand

**Solution:** 1.e4 f5 2.Qg4 f4 3.Ke2 f3 [g2=b]+ 4.Qh5 [f3,h7=w][h2=b]+ *the black pawn f7 turns white and returns to the initial position* g6 5.f4 Bg7 6.f5 Bxb2 7.f6 Bxa1 8.f7=S *the black Pf7 arrives in the initial position* Bg7 9.Qxg6 Bf8 10.Sxh8# *the thematic pawn checkmate his own king!*

An electronic version (PDF) of Curierul Problemistic, with the tourney results will be published in issue 10/2023, will be emailed to all tourney participants. Each participant can submit three problems per section and only two problems with co-author. The problems will be send in doc or pdf files, with the diagram of the chess pieces in the picture. Until the closing date ofthe tourney, the participant is asked to specify if the problem has been published in another magazine. Only original problems are allowed. The tourney is dedicated to established problemists.

**You can see the registered problem here:**

**Section A, Section B, Section C, Section D, Section E, Section F and Section G.**

**NOTE:** Problems that cannot be tested on a computer or have a very long resolution time will not be considered.

**Send to:** Dan-Constantin Gurgui [curierulproblemistic@outlook.com](mailto:curierulproblemistic@outlook.com)

**Closing date:** December 31<sup>st</sup> 2022.