

Quick Composing Tourney TT-216

Tourney name: "The Magic Wonder Masand Chess"

Stipulation: sections – A) #2-6, s#2-6, r#2-6; B) h#2-6; C) hs#2-6.

In all sections, instead a stipulation "mate" (#), following stipulations are allowed: "stalemate" (=) and "double stalemate" (==).

Theme: fairy problem with the condition **Masand:** "When a piece **X** by its move gives direct check, all pieces of the same color which are controlled by **X**, and all pieces of opposite color which are attacked by **X**, change color (except kings). A Rook, changed color in a corner, can participate in castling".

Fairy pieces and another fairy conditions are **not allowed**. In all sections **multiple** solutions are allowed if all the solutions are **thematic**. Twins of any type are **allowed**. Zero-positions are **not allowed**.

Only problems tested by the program which supports the Masand condition (Popeye or WinChloe) can be accepted for the tourney. Each participant should indicate by what program his problem was tested.

Depending on the amount and quality of the entries, there may be one award for all stipulations, or separate awards for different stipulations.

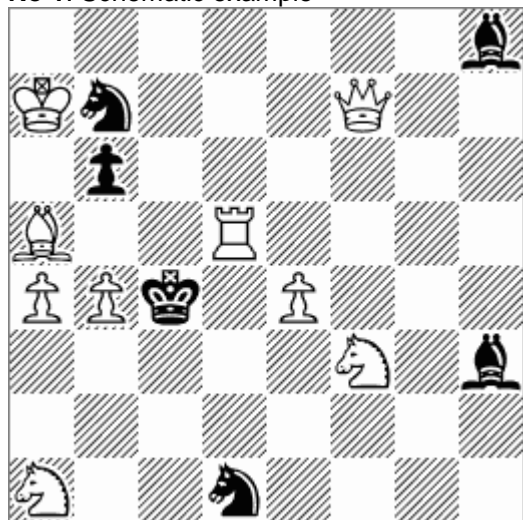
Judge: Petko Petkov.

Closing date: October 15, 2018

Entries to Aleksey Oganessian via e-mail: alexeioganesyan@gmail.com

All received problems will be presented to the judge in anonymous form.

Award will be published in 2018 on the website <http://superproblem.ru>

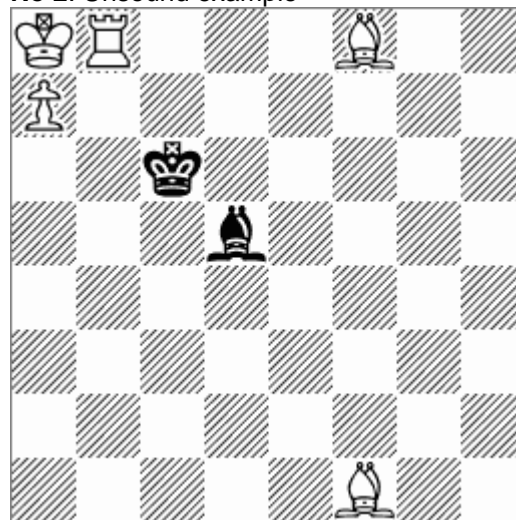
Examples (selected by the judge)**No 1. Schematic example**

#1

Masand

(9+6)

7b/Kn3Q2/1p6/B2R4/PPk1P3/5N1b/8/N2n4

No 2. Unsound example

#1?

Masand

(5+2)

KR3B2/P7/2k5/3b4/8/8/8/5B2

1st solution: **1.Qc7[b7=w][b6=w]#!** It is a mate, because the white Queen changed color of the black Sb7 and defense 1...Sc5 is impossible! (Other change of color - by Pb6 – has no importance).

2nd solution: **1.Rd4[d1=w]#!** Mate with double check, but Masand-effect provokes only the white Rook, changing the color of the bSd1! Here Qf7 is needed for mate (it gives also a check) but it has not Masand effect, because it does not make a move (therefore – the check by this piece is not direct!) and the color of Sf3/Sb7 does not change! False is 1.Rc5 [a5=b]+? Kxb4!

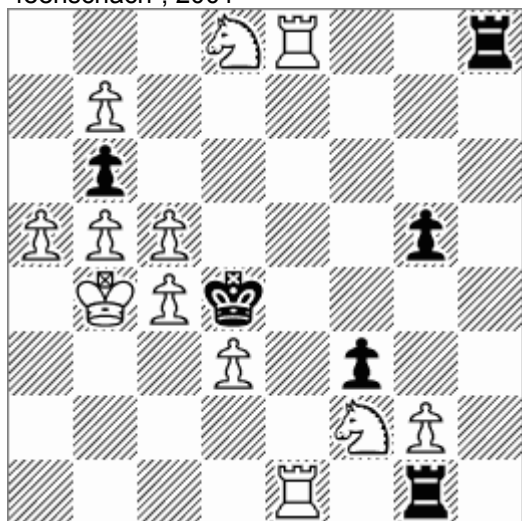
Here, the selfmate is impossible after 1.Bb5+ Kc7+! since the forward battery piece (the bKing) does not give a direct check (here the check gives only the rear battery piece Bd5) and hence the color of the white Rb8 does not change in black, so that a double check and mate would be obtained.

Masand Chess offers very rich opportunities for composing of interesting problems in all genres and styles. Follows a small series of instructive examples.

The earliest Masand examples were published by the inventor of this condition in 2001 in the magazine "feenschach" in a special article dedicated to known Serbian maestro Zdravko Maslar living long time in Andernach (Germany). The name "Masand" means: MASlar (ANDernach)!

Let's start with two such examples.

No 3. P. Petkov
"feenschach", 2001



#2*vvv (12+6)

Masand

3NR2r/1P6/1p6/PPP3p1/1KPk4/3P1p2/5NP1/4R1r1

*1...bxc5+ (a) 2.Se6[c5=w][g5=w]# (A)

*1...bxa5+ (b) 2.Sc6[a5=w]# (B)

But 1.Se6[c5=b]+? (A) is illegal because of self-check. And analogical 1.Sc6[a5=b]+? (B) is also illegal.

Other thematic tries:

1.R1e4[e8=b]+? (C) Rxe4!

1.R8e4[e1=b]+? (D) Rxe4!

1.b8B! – 2.Be5[h8=w]#

1...bxc5+ (a) 2.Se6[c5=w][g5=w]# (A)

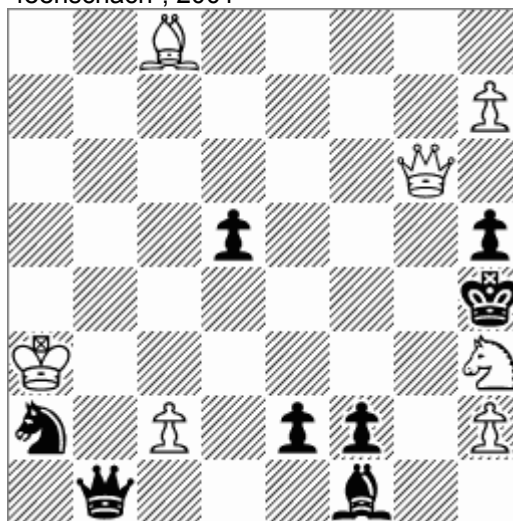
1...bxa5+ (b) 2.Sc6[a5=w]# (B)

1...Rxe8 2.R1e4[e8=w]# (C)

1...Rxe1 2.R8e4[e1=w]# (D)

Cross-checks, elements of Zilahi etc.

No 4. P. Petkov
"feenschach", 2001



#2*v

Masand

(7+8)

2B5/7P/6Q1/3p3p/7k/K6N/n1P1pp1P/1q3b2

Set-play demonstrates a very sharp duel with the cross-checks between the two queens!

*1...Qb4[e4=b]+! (a)

2.Qe4[c2=b][e2=w][b4=w][d5=w][h7=b]# (A)

*1...Qb3[a2=w][c2=b][h3=b][d5=w]+ (b)

2.Qg3[f2=w][h2=b][b3=w][h3=w]# (B)

*1...Qb2 [a2=w][c2=b]+ (c) 2.Qf6[b2=w][f2=w]# (C)

*1...Qc1[f1=w][c2=b]+ (d) 2.Qg5[c1=w] [d5=w][h5=w]# (D)

Thematic tries (further we shall designate the changes in colors of only the main figures):

1.Qe4+? (A) Qb4[e4=b]+! (a)

1.Qg3+? (B) Qb3[g3=b]+! (b)

1.Qf6+? (C) Qb2[f6=b]+! (c)

1.Qg5+? (D) Qc1[g5=b]+! (d)

A la Vladimirov theme!

1.h8R! – 2.Rxh5# (but not 2.Qxh5[h8=b]+?? Rxh5!)

and now in variants follows the already familiar duel:

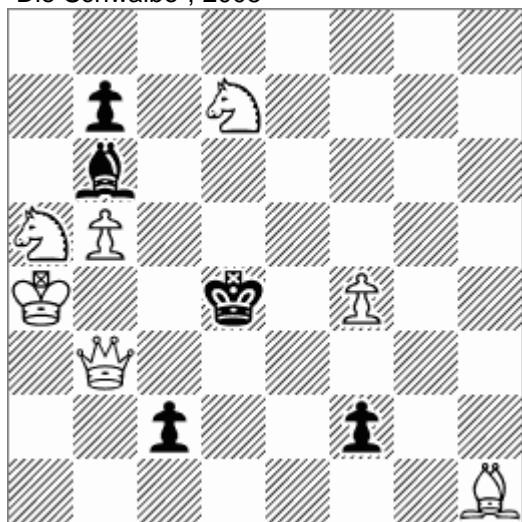
1...Qb4+ (a) 2.Qg4# (A)

1...Qb3+ (b) 2.Qg3# (B)

1...Qb2+ (c) 2.Qf6# (C)

1...Qc1+ (d) 2.Qg5# (D)

No 5. H. Gockel
 "Die Schwalbe", 2005



#2 (7+5)

Masand

8/1p1N4/1b6/NP6/K2k1P2/1Q6/2p2p2/7B

A try with double Masand-effect:

1.Qe3[f2=w][f4=b]+? fxe3!

1.Ka3! – 2.Qd3[c2=w]#

1...c1Q+ 2.Qd1[c1=w]#

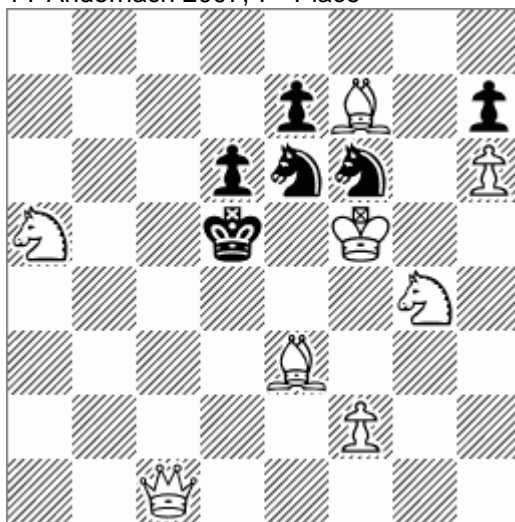
1...c1S 2.Qb2[c1=w]#

1...c1R 2.Qc3[c1=w]#

1...c1B+ 2.Qe3[c1=w]#

Black AUW in thematic variants! A very good additional variant follows after 1...Bc5+ 2.Qc4[c5=w]#!

No 6. M. Caillaud & U. Avner
 TT Andernach 2007, 7th Place



s#2 (8+6)

Masand

8/4pB1p/3pnn1P/N2k1K2/6N1/4B3/5P2/2Q5

A demonstration of Le Grand theme in s#:

1.f3? – 2.Qc4[g4=b]+ (A) Sxe3[c4=b]#

1...Sxg4 (a) 2.Qd1+ (B) Sxe3[d1=b]#

1...Se4!

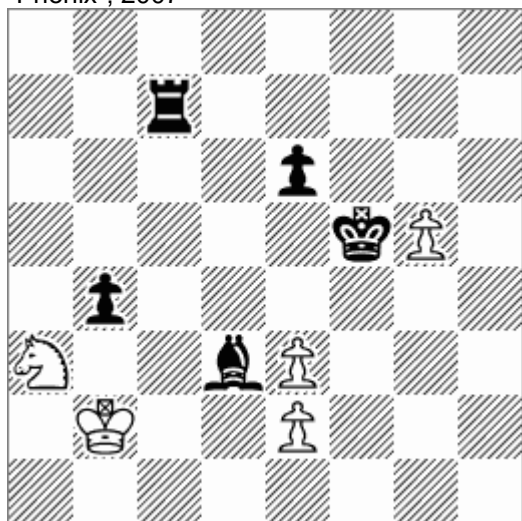
1.f4! – 2.Qd1+ (B) Sxe3[d1=b]#

1...Sxg4 (a) 2.Qc4+ (A) Sxe3[c4=b]#

1...Se4 2.Qh1 Sg3[h1=b]#

Unlimited and at the same time unexplored possibilities of this condition exist in genres h# and hs#. Follow three examples from world known authors on this arena:

No 7. V. Crisan & E. Huber
 "Phenix", 2007



h#3 (5+5)

b) Kb2→a4

Masand

8/2r5/4p3/5kP1/1p6/N2bP3/1K2P3/8

a) diagram:

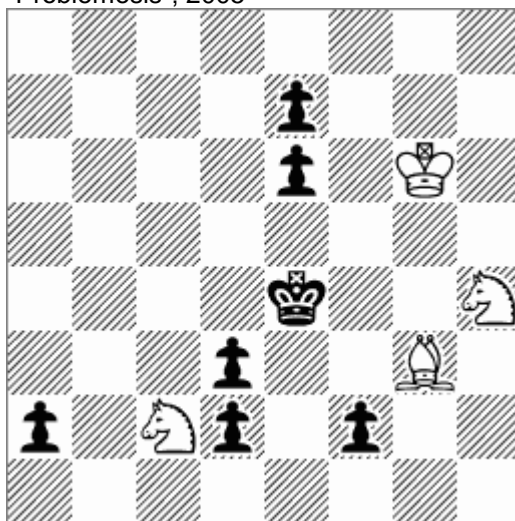
1.Bxe2 Sb5 2.Rc2[e2=w]+! Bd3[c2=w]+! 3.Ke5 Rc5#

b) Kb2→a4:

1.Rc6 Sc2 2.Bb5[c6=w]+! Rc5[b5=w]+! 3.Ke4 Bd3#

Diagonal-orthogonal echo, cross-checks, interchange of functions between bR/bB.

No 8. M. Caillaud
 "Problemesis", 2005



h#2 (4+7)

Masand

8/4p3/4p1K1/8/4k2N/3p2B1/p1Np1p2/8

1.d1B! Kf7! 2.f1R[d1=w]+! Bf3#!

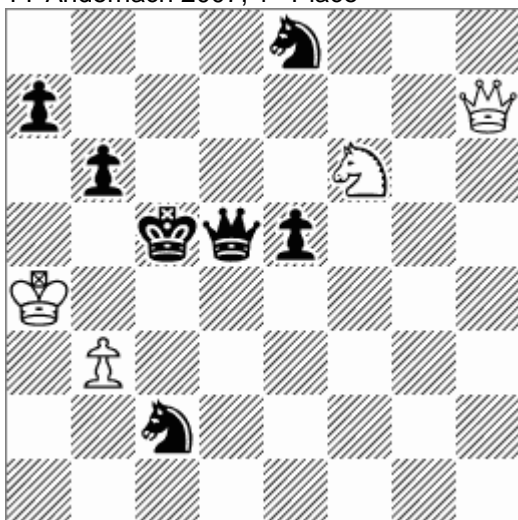
(impossible is Rxf3[d3=w]+?? – illegal self-check!)

1.d1S! Kg7! 2.a1Q [d1=w]+! Sc3#!

(impossible is Qxc3[d3=w]+?? – illegal self-check!)

An excellent problem with black AUW, cross-checks and model mates!

No 9. E. Huber & V. Crisan
TT Andernach 2007, 1st Place



hs#2 2 sol. (4+7)

Masand

4n3/p6Q/1p3N2/2kq3/K7/1P6/2n5/8

1.Qd7 Qd1 2.Se4+! Qd4[d7=b]#!!

1.Qe4 Qa8 2.Sd7+! Qc6[e4=b]#!!

Cross-checks and very interesting mates with two black (!!) Queens on the final. Diagonal-orthogonal echo!